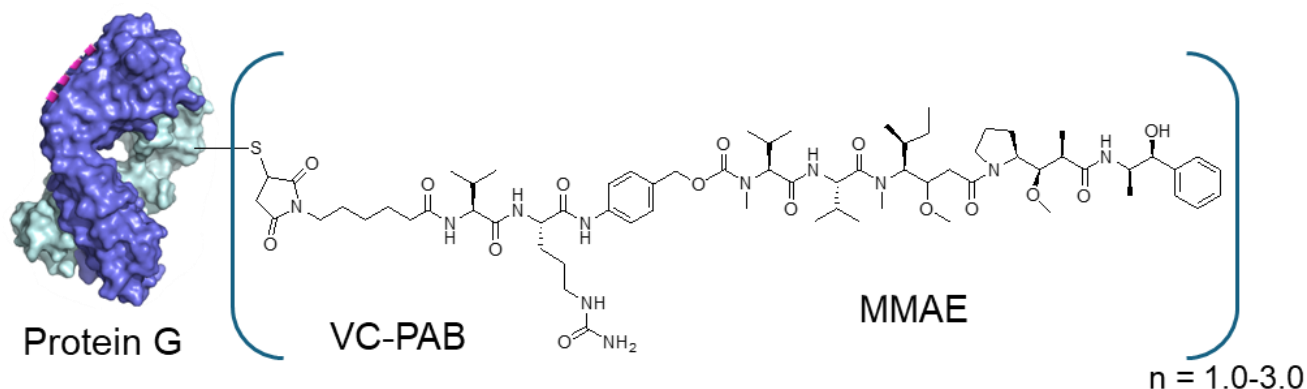


Catalog# BP-50156

Protein G -MMAE (cleavable)

Description:

Protein G-MMAE is a Protein-drug conjugate (PDC) of Protein G with microtubule-disrupting agent MMAE conjugate through a cleavable linker. >95% protein G were conjugated with MMAE, the DPR (drug protein ratio) $n = 1-3$ drugs per protein. Protein G is expressed in group C and G streptococcal bacteria. It is a ~60-kDa cell surface protein. It binds to most mammalian immunoglobulins primarily through their Fc regions. MMAE is a synthetic antineoplastic agent. It is also a microtubule-disrupting agent. This product is for research use only. The Protein G-MMAE has the following chemical structure:



Product Details	
Reactivity	Bind to most mammalian immunoglobulins primarily through their Fc regions.
Source	<i>E. coli</i>
Type	Recombinant Protein
M.W.	~21,600 (Apparent MW by SDS-PAGE: 32,000)
Measurement	A280 of 0.1% solution: 1.0
Isoelectric point (pI)	4.5
Conjugate	Protein G conjugated with -VC-PAB-MMAE
DPR (Drug to Protein Ratio)	>95% protein conjugated, 1-3 drugs per protein
Form	Liquid
Concentration	1 mg/ml
Purification	Size Exclusive Column
Storage buffer	20 mM Sodium Borate, 6% Trehalose, pH8.0
Storage conditions	4°C for short time, -20°C or -80°C for long time.